



Marquage des pneumatiques / Tyre marking

Competitors concerned:

STICKERS: All competitors

BARCODES: All competitors

RFID:

- All competitors entered with WRC cars
- All drivers entered with 4 WD cars

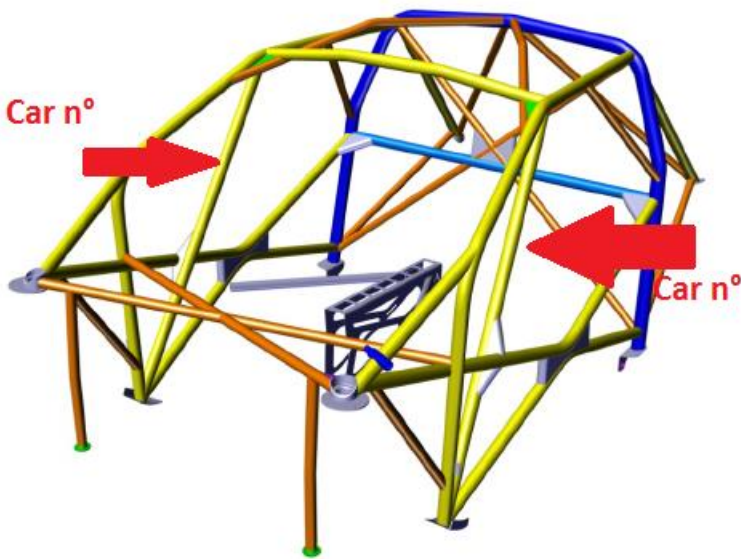
Procedure for Barcode and RFID readers:

- 1) Car number on safety cage must be scanned with barcode reader:

WRC2017



Car N°001



- 2) RFID tag or barcode number must be scanned on tyre

Type	
- Single barcodes:	
- Double barcodes:	

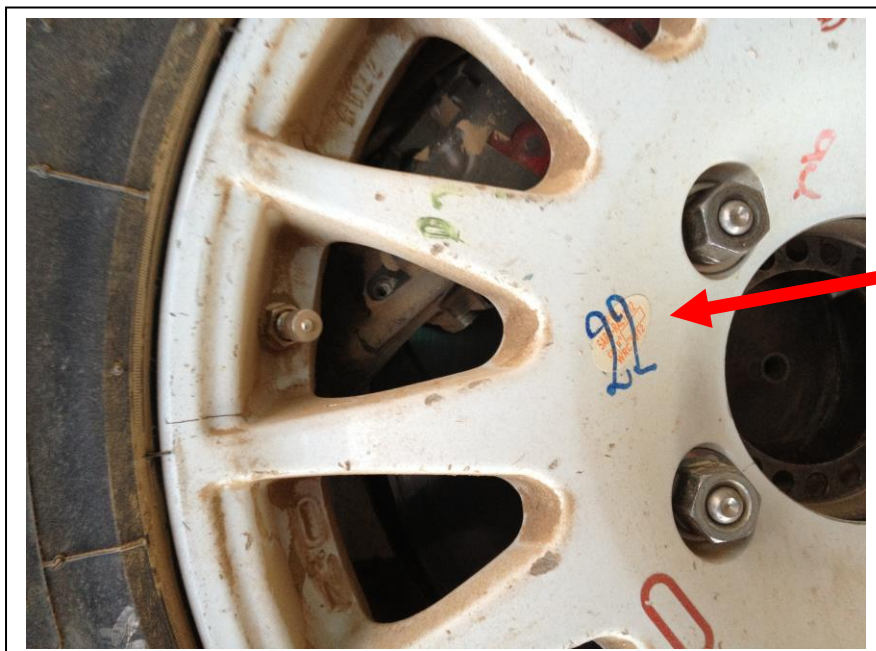
Procedure for FIA marking/checking stickers:

Follow below procedure

- ① CLEAN the part where the sticker will be fixed (maybe use “brake cleaner”)
- ② PUT the sticker at **the center** of the rim (NOT ON PLASTIC PROTECTION)



- ③ WRITE the car number on the sticker (please make sure that you 'll have enough permanent marker for the all Rally)



Sticker must be close to the tyre valve
!
Will be easier to find for checking!
!
Sticker must not be covered with protection